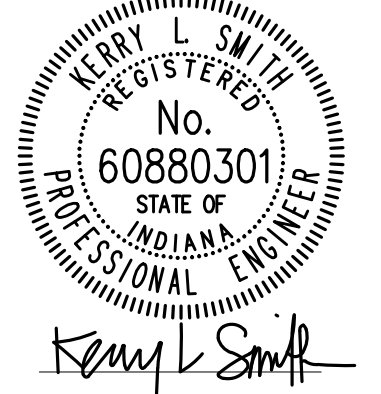
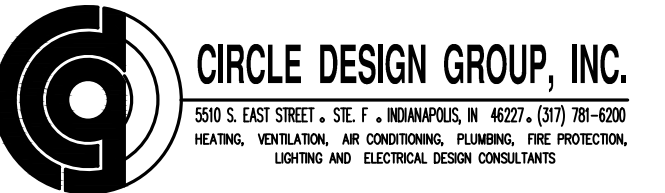


SEALS / SIGNATURES:



CONSULTANTS:

Mechanical / Electrical / Plumbing
Engineer:



Structural Engineer:



PROJECT



CAVANAUGH HALL

RESTROOM RENOVATION PHASE 2

425 University Boulevard
Indianapolis, IN 46202

PROJECT NUMBER
IU #20141189
CDG #13045A

DATE / ISSUE

02-18-15 95% CONSTRUCTION DOCUMENTS
OWNER REVIEW ISSUE

03-13-15 CONSTRUCTION DOCUMENTS

SHEET NAME

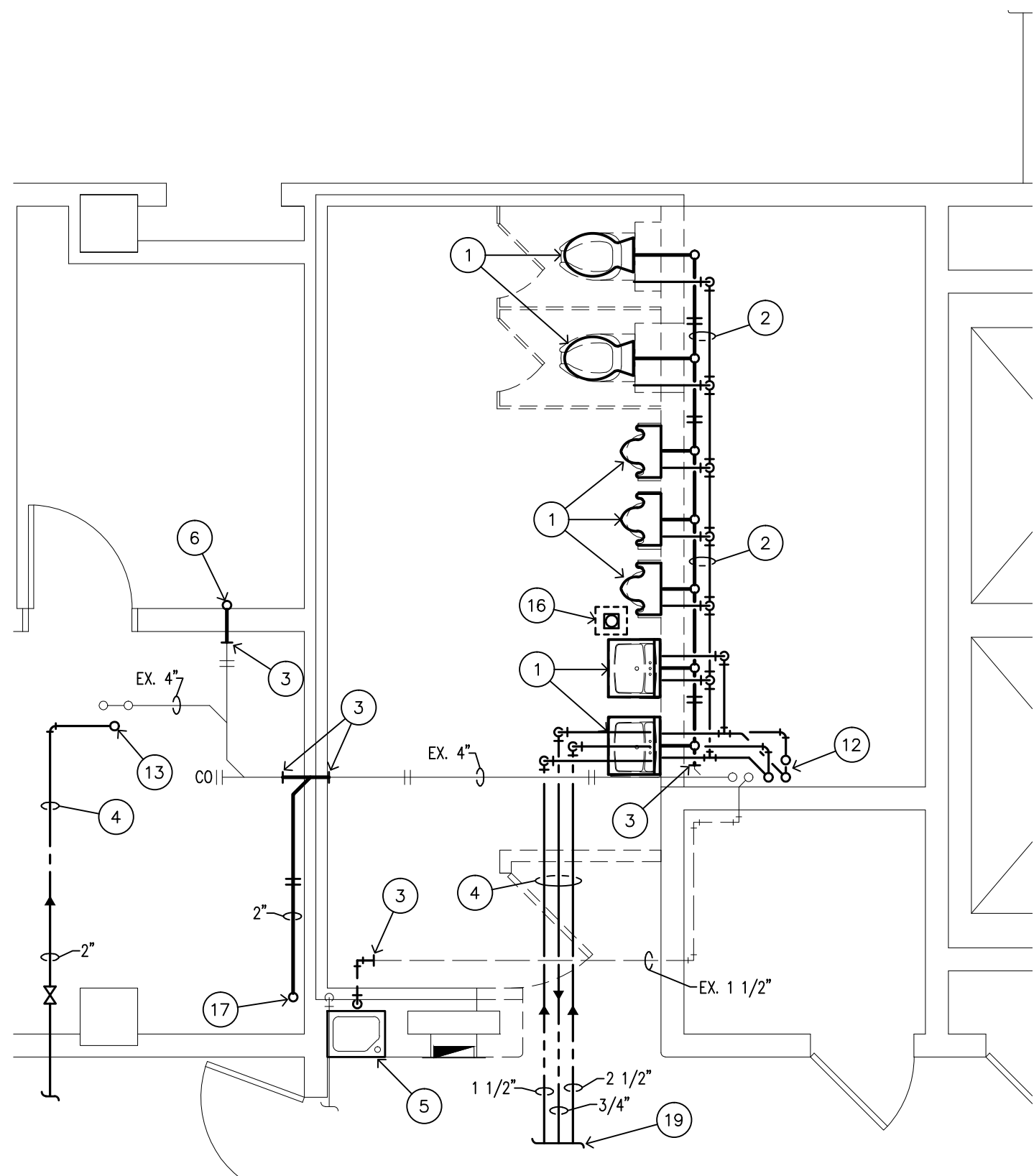
ENLARGED RESTROOM
PLANS - PLUMBING
DEMOLITION

SHEET NUMBER

PD201

PLAN NOTES:

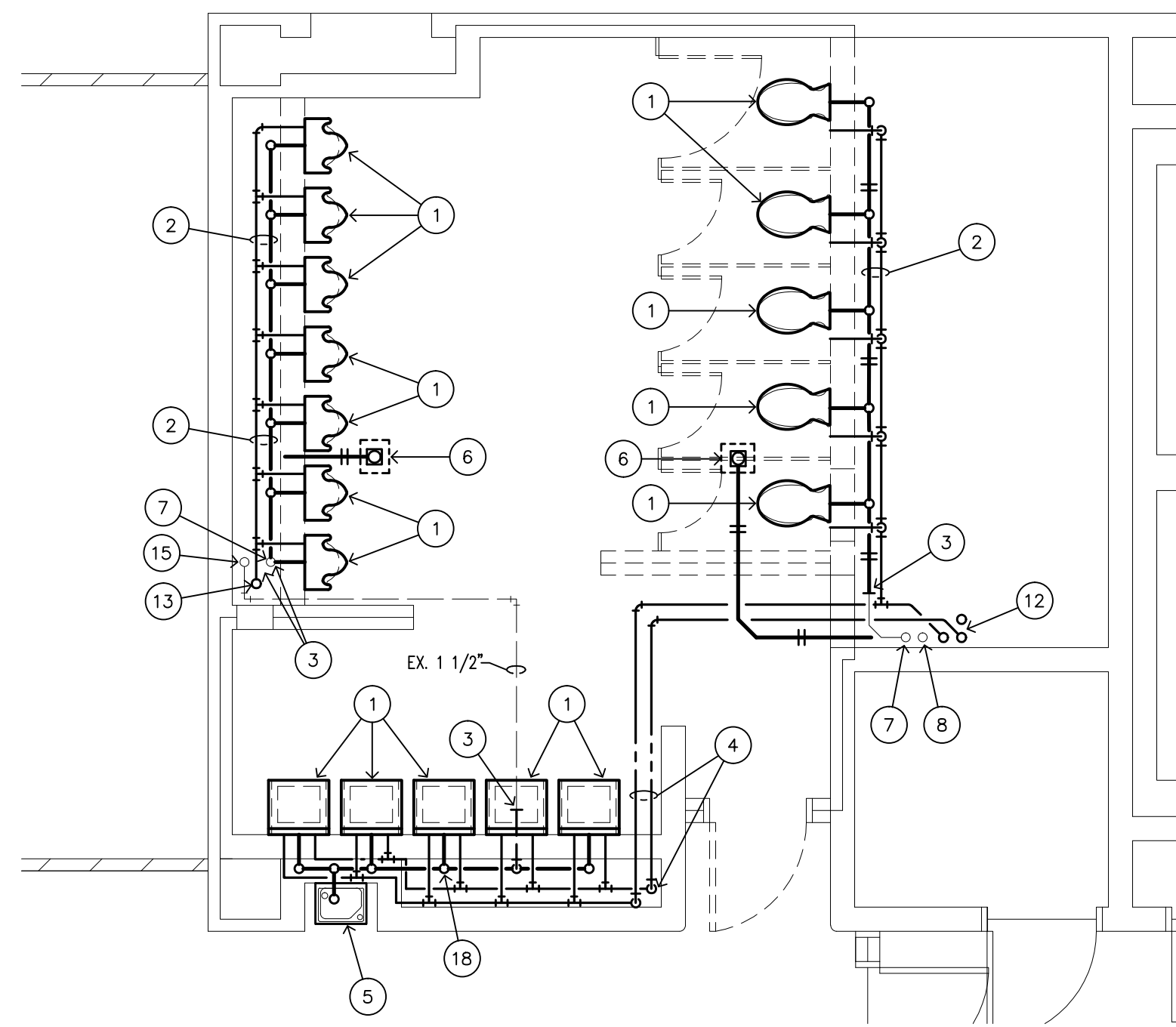
- 1 REMOVE PLUMBING FIXTURE, TRIM, CARRIERS AND ROUGH-IN PIPING COMPLETE. RETURN ALL AUTOMATIC FLUSH VALVES TO OWNER.
- 2 REMOVE PIPING WITHIN CHASE COMPLETE.
- 3 REMOVE PIPING BACK TO POINT INDICATED AND PREPARE FOR RECONNECTION.
- 4 REMOVE PIPING COMPLETE.
- 5 EXISTING ELECTRIC WATER COOLER TO BE TEMPORARILY REMOVED, CUT WALL AND REMOVE EXISTING 1 1/2" WASTE AND VENT PIPING IN WALL.
- 6 REMOVE FLOOR DRAIN AND ASSOCIATED PIPING COMPLETE.
- 7 EXISTING 4" WASTE STACK TO REMAIN.
- 8 EXISTING 4" VENT STACK TO REMAIN.
- 9 EXISTING 2" WASTE STACK TO REMAIN.
- 10 EXISTING 2" VENT STACK TO REMAIN.
- 11 EXISTING PIPING TO REMAIN.
- 12 REMOVE COLD, HOT AND HOT WATER RETURN RISERS COMPLETE.
- 13 REMOVE 2" COLD WATER RISER COMPLETE.
- 14 EXISTING PLUMBING FIXTURE TO REMAIN.
- 15 EXISTING 3" VENT STACK TO REMAIN.
- 16 REMOVE EXISTING FLOOR DRAIN. SAWCUT AND PATCH CONCRETE FLOOR TO MATCH EXISTING.
- 17 REMOVE 2" WASTE FROM ABOVE.
- 18 REMOVE 2" WASTE AND PREPARE FOR RECONNECTION.
- 19 REFER TO DRAWING PD202 FOR CONTINUATION OF PIPING.



**ENLARGED BASEMENT RESTROOM
PLAN - PLUMBING DEMOLITION**

(ALTERNATE 4)

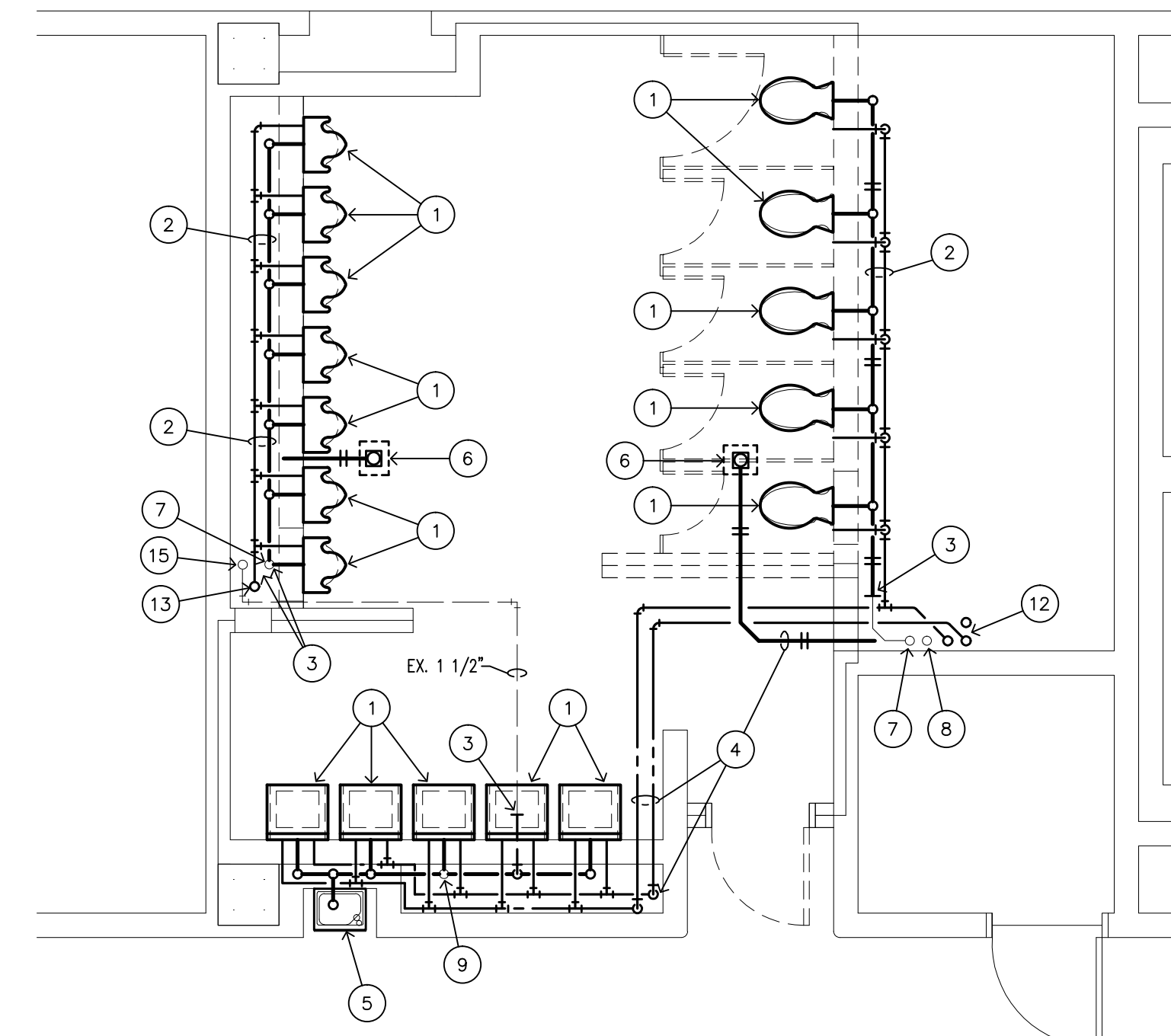
SCALE: 1/4" = 1'-0"



**ENLARGED FIRST FLOOR RESTROOM
PLAN - PLUMBING DEMOLITION**

(ALTERNATE 3)

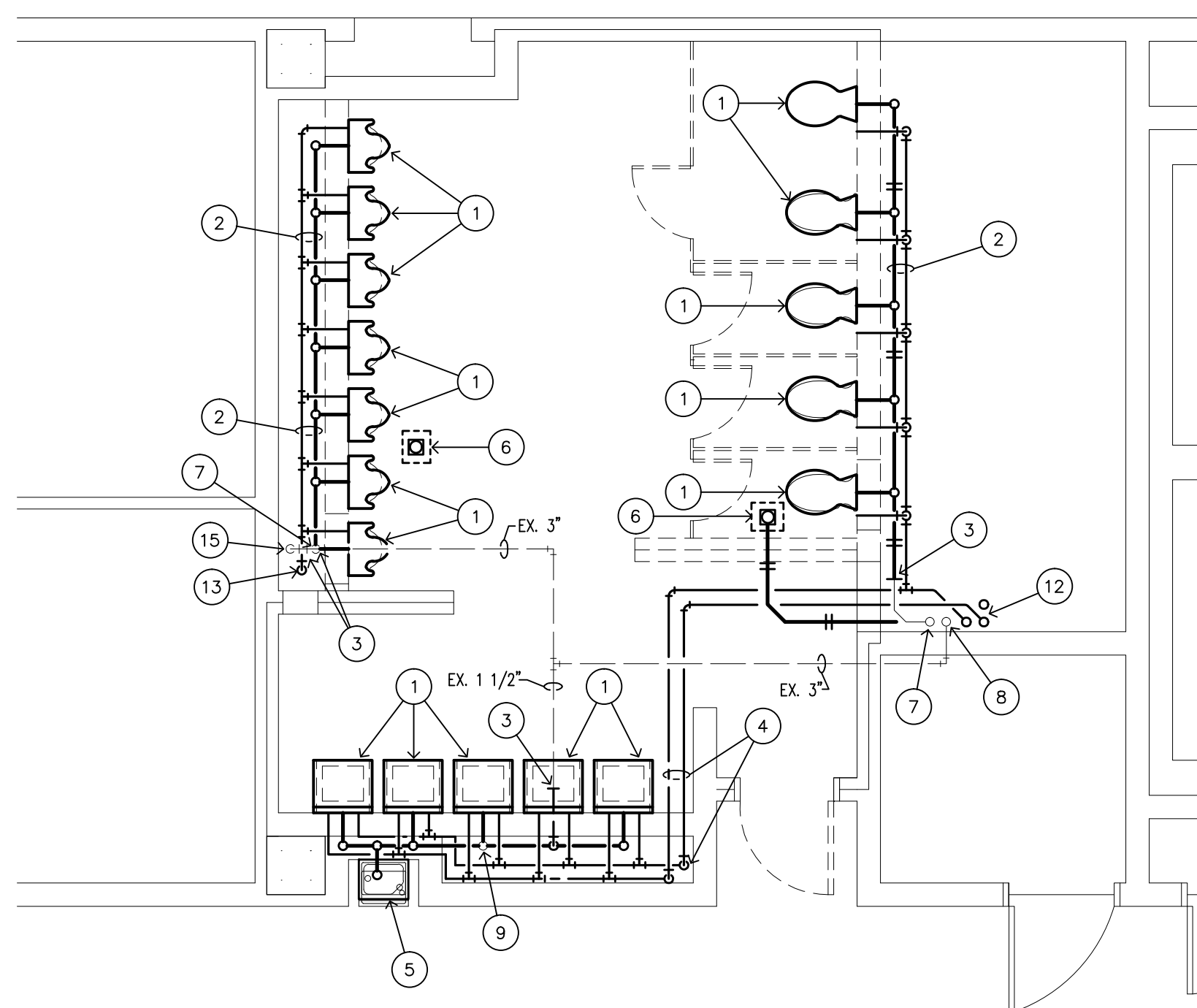
SCALE: 1/4" = 1'-0"



**ENLARGED SECOND FLOOR RESTROOM
PLAN - PLUMBING DEMOLITION**

(ALTERNATE 2)

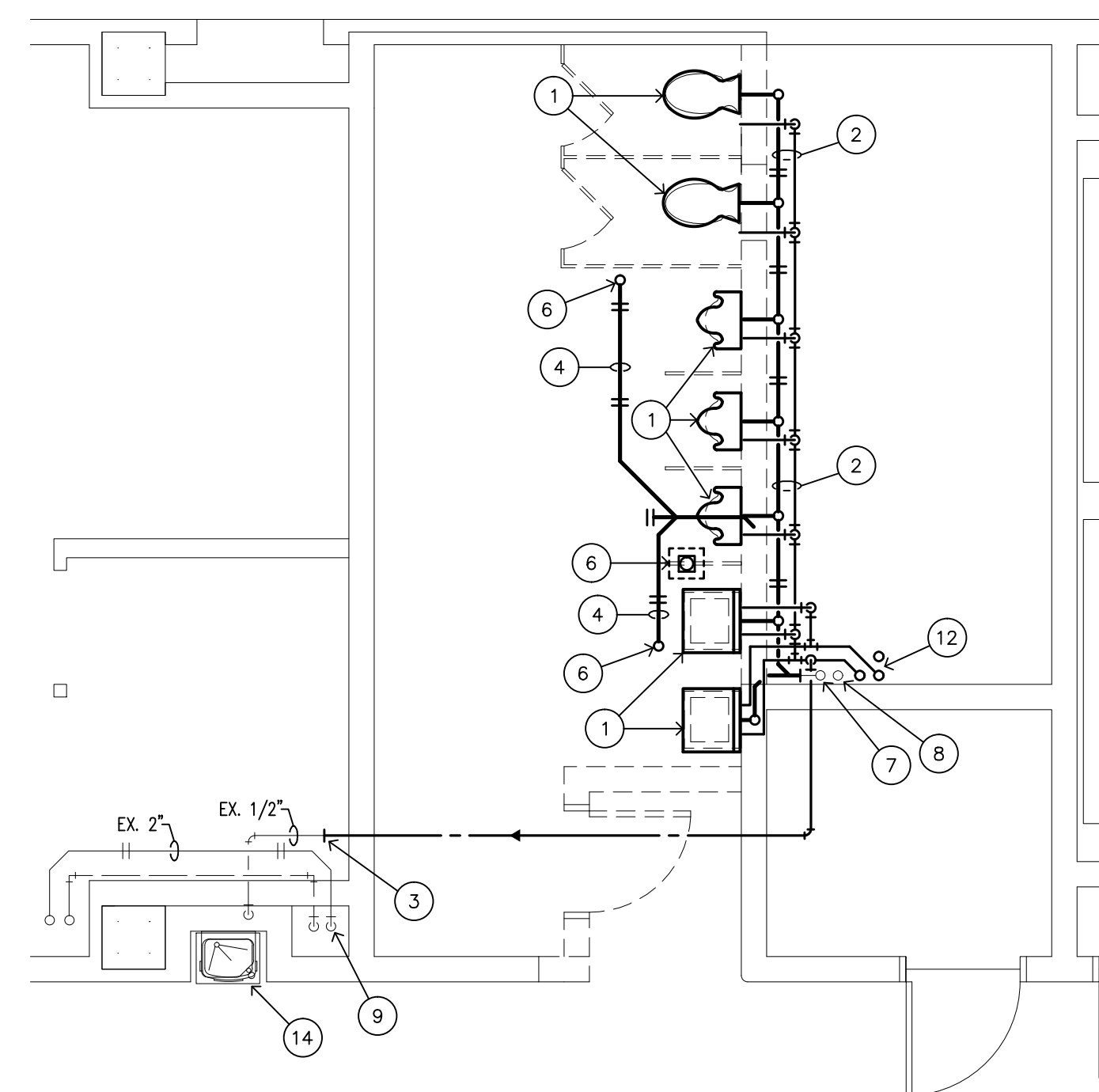
SCALE: 1/4" = 1'-0"



**ENLARGED THIRD FLOOR RESTROOM
PLAN - PLUMBING DEMOLITION**

(ALTERNATE 1)

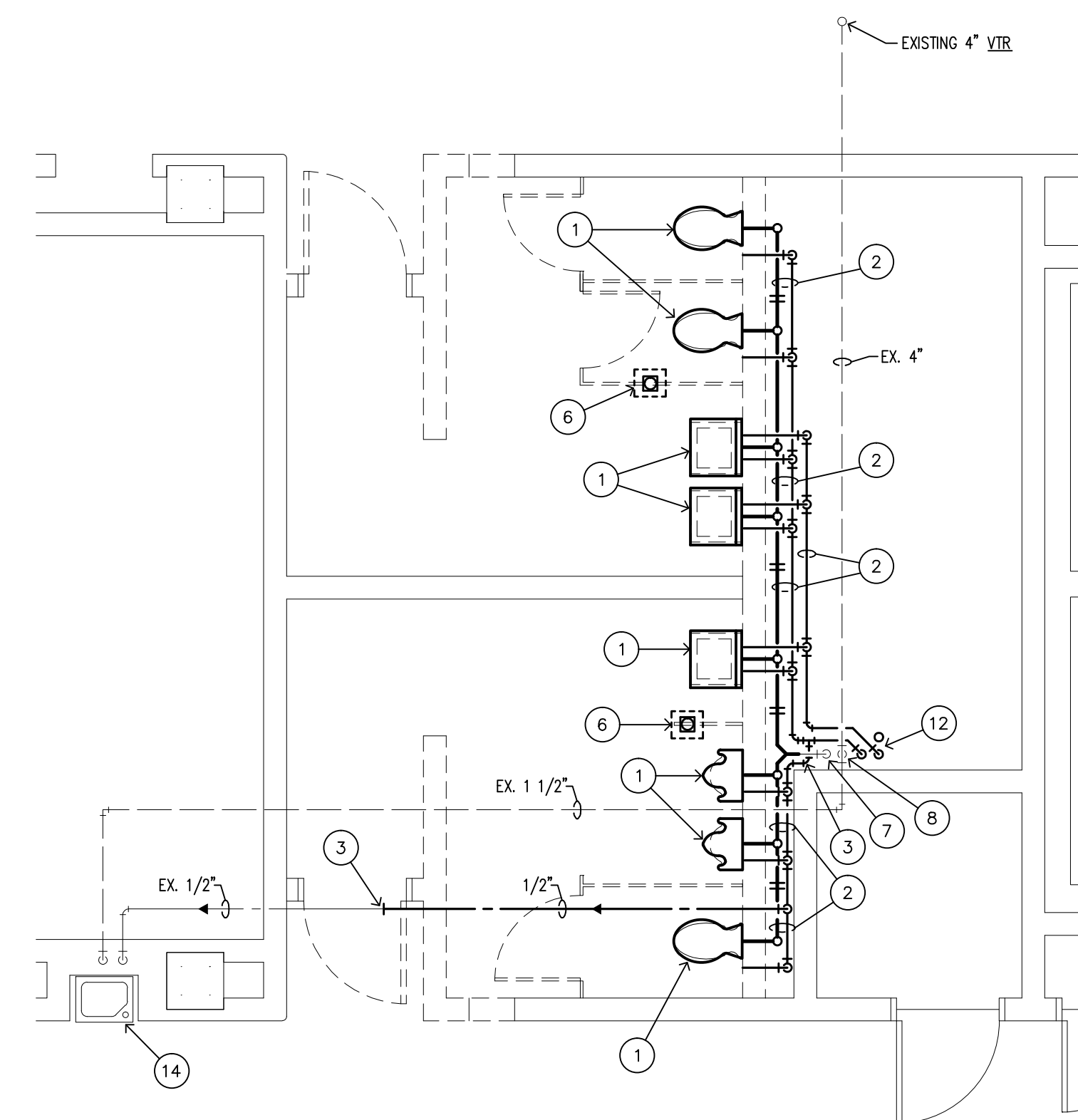
SCALE: 1/4" = 1'-0"



**ENLARGED FOURTH FLOOR RESTROOM
PLAN - PLUMBING DEMOLITION**

(BASE BID)

SCALE: 1/4" = 1'-0"



**ENLARGED FIFTH FLOOR RESTROOM
PLAN - PLUMBING DEMOLITION**

(BASE BID)

SCALE: 1/4" = 1'-0"